



1115 Fairgrounds Road  
Jefferson City, MO. 65109  
573.634.3070

# Something Special

Volume 3-December 2022



## Let's Talk ★ Tax Credits ★

Make a bigger impact with Tax Credits! Special Learning Center is pleased to offer Neighborhood Assistance Program (NAP) tax credits to donors. Qualifying donors to the Special Learning Center receive 50 cents back for every dollar they donate to SLC when filing their Missouri State taxes. Donors may also avoid capital gains tax and receive tax credits by donating publicly traded stocks and bonds. To see if you are a qualifying donor, visit [www.speciallearningcenter.com/donate](http://www.speciallearningcenter.com/donate) NAP tax credits are made possible by the Missouri Department of Economic Development.

Merry  
Christmas

Happy  
New Year



## ★ Meet Mia ★



Mia is a 5 year old little girl with Cerebral Palsy, but Mia's diagnosis doesn't slow her down! You will find her laughing and having fun at Special Learning Center. She loves spending time with her teachers, therapy team, and her friends at the center. Mia works with her therapists to master her walking proficiency and the skills needed to be successful in the classroom.

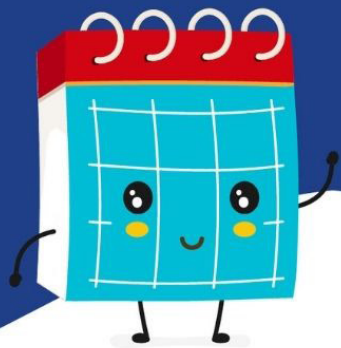
You will also find Mia in one of our early childhood special education classrooms getting ready for kindergarten. Mia is overcoming obstacles and moving towards a bright future with the help of her SLC team. We believe all things are possible for Mia.

## ★ SLC Christmas Wishes ★

Wanting to help out this holiday season?  
Here is your chance!

- Lysol Wipes
- Lysol Spray
- Laundry Detergent
- Dawn Dish Soap
- Large Ziploc Bags
- Batteries
- Disposable Gloves
- Shaving Cream
- Sticky Notes
- Copy Paper
- Card Stock Paper
- Colored Copy Paper
- Markers
- Tissues
- Baby Wipes
- Paper Towels





# How many kids do you want to help today?



Donate online to change a child's life.  
Scan the QR code or go to  
[www.speciallearningcenter.com/donate](http://www.speciallearningcenter.com/donate)



## WE BELIEVE IN MIA

Please help support us by making a one-time donation:

☐ \$60 ☐ \$120 ☐ \$180 ☐ Other

Consider joining our Monthly Giving Club:

☐ \$10/mo ☐ \$25/mo ☐ \$50/mo  
☐ \$100/month ☐ Other

Please make checks payable to:  
Special Learning Center

A special thank you to all of our donors, board members, volunteers, staff members, and SLC families. Your continued support is what helps us better serve our students.

Helping children with developmental delays and disabilities reach their maximum potential

Please contact Special Learning Center at 573-634-3070 for more information