



1115 Fairgrounds Road  
Jefferson City, MO. 65109  
573.634.3070

# Something Special

Volume 1-April 2022

Welcome to Special Learning Center's first quarterly newsletter, *Something Special*. We look forward to sharing with you, our friends and donors, updates on our programs and upcoming events. To receive this newsletter electronically, please send an email to [cburton@speciallearningcenter.com](mailto:cburton@speciallearningcenter.com). There is always "Something Special" happening at the Center!



## Meet Leah



Leah arrived into this world in 2018, calling the NICU her home for the first 26 days. She was diagnosed with multiple anomalies. Her first year of life, she sustained multiple sedated procedures and 2 surgeries. Leah has received physical therapy, occupational therapy, and speech therapy for years which her family is so grateful for. Leah has shown us day after day that she can overcome any obstacle.

## Did you KNOW?

- Serving 800 Central Missouri children
- Serving children with autism, neurological disorders, learning disabilities, and other mental or physical disabilities
- Only childcare facility capable of serving children with severe and complex needs

## Let's Talk NAP Credits



**Make a Bigger Impact with Tax Credits!** Special Learning Center is pleased to offer Neighborhood Assistance Program (NAP) tax credits to donors. Qualifying donors\* to the Special Learning Center receive 50 cents back for every dollar they donate to SLC when filing their Missouri State taxes. Donors may also avoid capital gains tax and receive tax credits by donating publicly traded stocks and bonds. \*To see if you are a qualifying donor, visit [www.speciallearningcenter.com/donate](http://www.speciallearningcenter.com/donate). NAP tax credits are made possible by the Missouri Department of Economic Development.



# upcoming events

save the dates

**Baby, We're Back!**

**15th Annual CAPITAL CITY COOK-OFF**

*Sample Ribs from the Best Pit Masters in Central Missouri*

**FRIDAY, APRIL 22**

**RIBS MUSIC BEER**

Jaycees Cole County Fairgrounds - Ribs Served at 5 p.m. until gone

For more info or purchase tickets, visit [www.capitalcitycookoff.com](http://www.capitalcitycookoff.com)

\$25/Ticket (\$30 at the door)  
Ticket Price includes All You Can Eat Ribs & Two Drink Tickets  
Music by The Dave Baker Band

**SPECIAL LEARNING CENTER GOLF TOURNAMENT**

Redfield Golf Course & Country Club

**JUNE 10, 2022**

**Tee Off Time-10:00 AM**

**SPONSORSHIPS AVAILABLE**

Team Registration: Entry Fee- \$140 per player  
(includes cart & 2 Mulligans)

PLEASE CONTACT HEATHER RENKEMEYER AT  
SPECIAL LEARNING CENTER  
FOR SPONSORSHIP INFO AND TEAM REGISTRATION  
573-634-3070

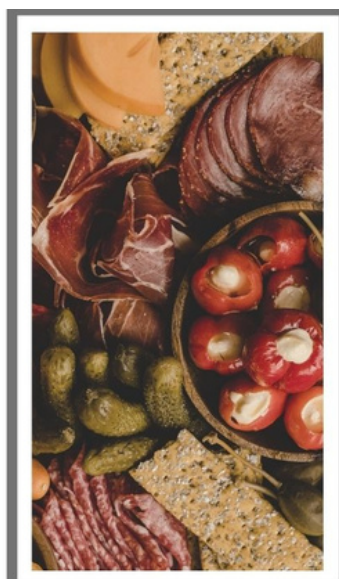
[www.speciallearningcenter.com](http://www.speciallearningcenter.com)

**Perfect PAIRINGS**

A PAIRING EXPERIENCE benefiting Special Learning Center

**SAVE THE DATE!**

THURSDAY, AUGUST 25, 5:30 P.M.  
CAPITAL BLUFFS EVENT CENTER



Join us for a unique event featuring pairings such as Artisan Beer & Chocolate, Soda & Sliders, Wine & Cheese, Martinis & Grilled Cheese, Espresso & Berries, Bourbon & Cigars, Oreos & Milk and much more!

Guests will enjoy stations hosted by "local celebrities" offering a variety of paired items. In addition to the pairing stations, guests will enjoy a bountiful charcuterie board at their guest table. Join us for an evening of tastings, entertainment, fun and the "Final Pairing of the Night" where our guests will be "paired" with a wish of a Special Learning Center child.

*Mark your calendar for this exciting, new event!*

**Helping children with developmental delays and disabilities reach their maximum potential**

**Please contact Special Learning Center at 573-634-3070 for more information**